

VS
SASSOON



HYDRO SMOOTH 5-IN-1 AIR STYLER

INSTRUCTION BOOKLET

Please ensure you read & follow the styling instructions
before using for the first time.

VSHA2774A

**NEVER
UNDERESTIMATE
THE POWER OF
A WOMAN WITH
GOOD HAIR**

SEE AMAZING, BE AMAZING

For all our style tutorials
check us out online
vssassoon.com.au





IMPORTANT SAFETY INSTRUCTIONS

The following safety precautions should always be followed when using electrical appliances, especially when children are present in your household. Please read these instructions carefully & keep for future reference.

DANGER:

- Do not use this appliance in or near bathtubs, showers, basins or other vessels containing water - keep the appliance dry.
- When this appliance is used in a bathroom, unplug it after use given the proximity of water hazards are present even when the appliance is switched off.
- Do not immerse the appliance into water or other liquids.
- If this appliance falls into water, unplug it immediately - **DO NOT REACH INTO THE WATER.**
- This appliance is a burn hazard. Keep appliance out of reach from young children during use and cool down.
- Always place the appliance on a stand if one has been provided, or on a heat-resistant flat surface.



WARNING: Before & During Use

- Before using, always ensure that the voltage marked on the appliance is the same as your local power voltage.
- If the appliance is designed to be connected to a detachable power supply (otherwise known as a charger or adaptor), the appliance must only be used with the power supply it was sold with.
- Do not operate this appliance or disconnect from the power supply with wet hands.
- Never use this appliance at the same time as styling products such as aerosols (spray).

- Be very careful when handling this appliance as parts of it may get extremely hot.
- Do not place the appliance on any heat sensitive surfaces or near flammable materials or objects.
- Keep the cord away from heated surfaces.
- Never block the air openings of the appliance or place on a soft surface such as a bed or couch where the air openings may be blocked - keep the air openings free of lint & other debris.
- Do not cover this appliance with anything when it is switched on or hot.
- To avoid electric shock, do not drop or insert any object into an opening in this appliance.
- This is a high heat appliance. Care must be taken to avoid the hot surfaces of the appliance coming into direct contact with the skin, in particular the eyes, ears, face & neck.
- Do not use extension cord with this appliance.

WARNING: Storage & Maintenance

Always unplug the appliance immediately after use & before cleaning or maintenance.

Do not wrap the power cord tightly around the appliance when storing. This causes undue strain on the power cord & protective guard. Over time, this will damage the power cord resulting in an unsafe condition to the user.

- If the power cord is damaged it must be replaced by the manufacturer, its service agent or similarly qualified persons in order to avoid a hazard.
- Do not leave the appliance unattended when plugged in or switched on.
- Always allow the appliance to cool down before storing away in a location where children cannot reach it.
- Do not store or place this appliance in a location where it can fall or be pulled into a bath or sink.
- Never operate this appliance if it has been dropped or damaged, or if it is not working correctly.

- If this appliance is serviced by an unqualified person this could result in an extremely hazardous situation for the user. Contact Conair Customer Service if you have any issues operating your appliance.

CAUTION:

- This appliance is not intended for use by infirm persons (including children) with reduced physical, sensory or mental capabilities, or lack of experience & knowledge unless they have been given supervision or instruction concerning use of the appliance by a person responsible for their safety.
- Children should be supervised to ensure they do not play with the appliance.
- Use this appliance only for its intended use & as described in this instruction booklet. This appliance is not intended for commercial use.
- Do not use any attachments other than those supplied by Conair Australia Pty Ltd.
- For additional protection, the installation of a residual current device (RCD) with a rated operating current not exceeding 30mA is advisable in the electrical current circuit supplying the bathroom - ask your installer for advice.

HYDRO SMOOTH 5-IN-1 AIR STYLER

AMAZING CHOICE!

You'll love how your hair will look & feel after using this revolutionary 5-in-1 hair dryer brush with Plasma Conditioning Ions. Designed with a unique air attraction system that creates millions of supercharged Plasma Ions that when released into the hair creates a microscopic coating, wrapping each hair cuticle, boosting & sealing the hydration level & reducing the transpiration of moisture that colouring hair, bleaching & environmental elements can cause over time.



1. 1000 watts of styling power
2. 2 heat settings plus cool setting:
 - High heat for thick hair
 - Low heat for fine hair
 - Cool air to set your style
3. Advanced Plasma Conditioning Ions
4. Ceramic Technology
5. 2.5m salon length swivel power cord
6. Removable rear filter
7. **DRY:** Concentrator attachment
8. **SMOOTH:** Soft cushion brush attachment
9. **STRAIGHTEN:** Straightening brush attachment
10. **SHAPE:** 20mm round-shaped brush attachment
11. **VOLUME:** 55mm oval-shaped brush attachment
12. Storage case

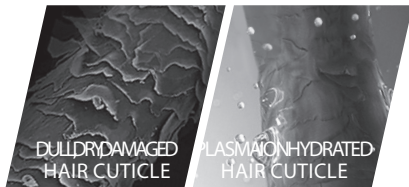
CERAMIC TECHNOLOGY

Ceramic Technology helps keep your hair looking healthy & shiny by maintaining even heat during the drying & styling process. Static is reduced by quickly sealing the hair cuticle layer ensuring minimal frizz making your hair easier to manage.

ADVANCED PLASMA CONDITIONING IONS

Many aspects of modern living, including air conditioning, contact with man-made fibers & air pollution add to the build-up of static electricity in your hair. Even simply brushing & towel-drying your hair can increase these levels. This static charge causes the scales, or cuticles of the hair, to push hair strands apart, resulting in a rough hair surface. Consequently, your hair may have a dull appearance. High levels of static charge cause your hair to become 'flyaway' & difficult to style.

Advanced Plasma Conditioning Ion technology is designed with a unique air attraction system that creates millions of supercharged Plasma Ions that when released into the hair creates a microscopic water molecule coating, wrapping each hair cuticle, boosting & sealing the hydration level & reducing the transpiration of moisture that colouring hair, bleaching & environmental elements can cause over time. The Plasma Conditioning Ions bring an equilibrium to your hair, hydrating & replenishing each hair cuticle for an overall conditioning effect, so that hair feels healthier, glossier, smoother & frizz-free after consistent use.



HOW TO USE THE HYDRO SMOOTH 5-IN-1 AIR STYLER

IMPORTANT:

Hair that has been heavily bleached or chemically treated should only use the low heat setting on this product. Please consult your hairdresser on using heated appliances if you have any concerns about the condition of your hair.

CAUTION:

Take care not to direct the airflow directly onto the skin (e.g. scalp, neck ears, face, etc.) as hot air from the appliance can, particularly if held too close, cause discomfort or even burn.

BEFORE USING

- Remove all packaging & point of sale labels before use.

FITTING & REMOVING THE ATTACHMENTS

To attach - place the selected attachment onto the power handle & line up the two indents with the buttons on the handle. Push the attachment down onto the power handle until it clicks into place.

To remove - press & hold the two buttons on the side of the power handle & pull the attachment away from the handle.

DRY:

CONCENTRATOR ATTACHMENT

The concentrator attachment pre-dries & prepares hair for styling.

To use:

Direct the airflow onto the hair & move the Hydro Smooth 5-in-1 Air Styler around the head until hair is 80% dry.

SMOOTH:

SOFT CUSHION BRUSH ATTACHMENT

The soft cushion brush attachment with flexible bristles glides through curls & detangles knots as you dry to leave hair noticeably smoother.

To use:

1. Place the brush head under a section of hair, close to the scalp with the soft flexible bristles pointing upwards.
2. Use your other hand to pull the hair section taut against the brush head until the bristles penetrate through the hair.
3. Gently glide the brush head through the section of hair to remove knots and curls and smooth as you dry- For added control, place your other hand over the brush head as you glide down the hair section.
4. To finish your style and smooth the top of the hair, place the brush on the top of the hair section and brush as normal.
5. Repeat for each section of hair.

STRAIGHTEN:

STRAIGHTENING BRUSH ATTACHMENT

The straightening brush attachment with firm bristles creates gentle tension to control & straighten hair as it dries for a sleek, shiny finish.

To use:

1. Place the brush head under or over a section of hair approximately 3cm wide, close to the scalp with the bristles pointing upwards (if the brush head is placed under the section) or downwards (if the brush head is placed over the section).
2. Use your other hand to pull the hair section taut against the brush head until the combs penetrate through the hair.
3. Gently glide the brush head through the section of hair. As the

brush head nears the end of the hair section, turn the brush head under or over to give shape at the ends of the hair.

4. For added control, place your other hand over the brush head as you glide down the hair section.
5. Repeat for each section of hair.

SHAPE:

20MM ROUND-SHAPED BRUSH ATTACHMENT

The 20mm round-shaped brush attachment with soft nylon bristles for smooth shaping of ends, fringes or styling shorter hair lengths.

To use:

1. Place the brush head underneath a section of hair, close to the scalp & hold for a few seconds to boost volume at the roots.
2. Slowly move the brush head down through the hair, as you reach the end of the hair section, rotate the power handle slightly towards your face to curl the ends under & create shape for a more natural style.
3. For a lasting style, select the cool setting on warm hair whilst holding the brush head at the roots.
4. Repeat for each section of hair.

VOLUME:

55MM OVAL-SHAPED BRUSH ATTACHMENT

The 55mm oval-shaped brush attachment with a select mixture of flexible & soft nylon bristles creates envious volume as you dry.

To use:

With this attachment, you can use 2 different styling processes:

- a) Wrap & release from the ends, or;
- b) Blow-out boost from the roots.

1. Section your hair - the number of sections will depend on how much hair you have. For hair of average thickness, part your hair from ear to ear, creating a top & bottom section. Clip the top section out of the way. Roughly part the bottom section down the middle, bringing each side in front of your shoulders. You'll work on each side separately.

To use the wrap & release from the ends process:

2. Take a section of hair that's approximately 3cm wide. Place the oval brush at your ends & holding the end of the attachment, roll the brush up the length of your hair until the barrel is at your roots, wrapping the hair around the brush in the process.
3. Wait 10 to 20 seconds, then slowly wind the brush downward, unraveling your hair in the process.
4. Continue to repeat the wrapping & releasing process on all layers & sections of hair.

To use the blow-out boost from the roots process:

2. Take a section of hair that's approximately 3cm wide. Place the oval brush near the root & brush away from the head while gently rotating. This will create professional like volume.
3. Take about 10 seconds on each hair section.
4. Continue to repeat for all layers & sections of hair. For more curve, wrap the hair around the barrel & hold for a few seconds.

OPERATING INSTRUCTIONS

Wash, condition & towel dry your hair.

Ensure your hair is about 80% dry, combed through & tangle free. If your hair is wet, use the concentrator attachment to pre-dry the hair to 80% dry.

1. Make sure your styler is switched to the off setting before plugging into a 220-240V- suitable power outlet.
2. Divide your hair into sections, between 2.5cm - 5cm wide depending on your hair type & the attachment you'll be using.
3. Secure the selected attachment onto the power handle. To interchange between the attachments, refer to **FITTING & REMOVING THE ATTACHMENTS**.
4. To turn the Hydro Smooth 5-in-1 Air Styler on, slide the power switch to the heat setting suitable for your hair type. There are 2 heat settings plus a cool setting:
 - Slide the switch to the third position for the high heat 'II'. This heat setting is suitable for medium to thick hair.
 - Slide the switch to the second position for the low heat 'I'. This heat setting is suitable for delicate, fine, bleached or coloured hair.
 - Slide the switch to the first position to select the cool setting '*'. Use the cool setting on warm hair to set your style.
5. After use, slide the switch to the 'O' position to switch off & unplug the power.
6. Allow the appliance to cool before storing away.
7. Once cooled, place the power handle & attachments into the storage case in their designated compartment to protect while in storage.

STORE-IT-ALL PREMIUM CASE

Protects & neatly stores your styler + it's 5 attachments, complete with a compartment for every piece. To keep the power handle & attachments in good order, it is suggested to store in the compartments:



SEE AMAZING, BE AMAZING

For all our style tutorials
check us out online
vssassoon.com.au



CLEANING & MAINTENANCE

Blocked or clogged air intake vents will cause the styler to overheat. The rear filter should be checked & cleaned on a regular basis - to help maintain optimum performance & prevent overheating.

Unplug the styler & allow to cool completely before cleaning or storing.

- Holding the handle of your styler firmly, twist the rear filter anti-clockwise to remove.
- Using a soft brush, clean any hair & other debris that may build up in the filter & mesh.
- Realign & replace the rear filter & mesh by pushing back into position & twisting clockwise until it clicks into place.

If overheating occurs, an automatic safety device will shut the styler or the heat off to prevent damage or personal injury. If the styler or heat turns off, unplug the cord & allow the dryer to cool for 15 minutes before restarting. Make sure the air vents are 100% clean.

LIMITED 3 YEAR WARRANTY

Retain this section of the warranty card with your receipt/proof of purchase. You must present it to obtain replacement or service under the warranty.

The warranty may only be claimed where proof of original purchase is presented, i.e. original purchase receipt or invoice.

Attach a copy of your purchase receipt and store in a safe place.

To make a warranty claim, call Customer Service on the phone number or email below. Or you can return the defective product back to the place it was purchased where it will be replaced (see point 12 of paragraph C. Conditions).

Please provide the following details:

1. Date of purchase
2. Retailer name & location
3. Product name/model number
4. Confirm you have your purchase receipt
5. Detail the problem with your product

Conair Australia Pty Ltd

PO Box 146
Terrey Hills
NSW 2084

Customer Service

Australia
1800 650 263
email: aus_info@conair.com

Conair New Zealand Ltd

PO Box 251159
Pakuranga, Auckland
New Zealand 2140

Customer Service

New Zealand
0800 266 247
email: aus_info@conair.com

WARRANTY AGAINST DEFECTS

A. AUSTRALIAN CONSUMER LAW

1. Our goods come with guarantees that cannot be excluded under the Australian Consumer Law. You are entitled to a replacement or refund for a major failure and compensation for any other reasonably foreseeable loss or damage. You are also entitled to have the goods repaired or replaced if the goods fail to be of acceptable quality and the failure does not amount to a major failure.
2. The guarantees under the Australian Consumer Law (“ACL”) are provided in sections 51 to 59 inclusive of the ACL (“Statutory Guarantees”) and the remedies are provided in sections 259 to 266 inclusive of the ACL (Statutory Remedies).

B. VS SASSOON EXTENDED WARRANTY

1. In addition and subject to the Statutory Guarantees and Statutory Remedies, the following express warranty (“Warranty”) commences from the date of purchase and continues for a period of **36** months (“Warranty Period”) after which it expires. Subject to the conditions in Section C below, Conair warrants to the original purchaser (“Purchaser”) of the VS Sassoon product that is the subject of this warranty (“Product”) that if during the Warranty Period, the Product suffers from any defect caused by faults in materials or workmanship, Conair will a) replace the Product, or b) exchange defective parts in the Product or c) repair the Product, as Conair may choose in its discretion (“Warranty”). In this Warranty “Conair” means Conair Australia Pty Limited (ABN 64 068 492 044) of The Equinox Centre, Suite 101, 18 Rodborough Rd, Frenchs Forest, NSW, 2086. in relation to Products purchased in Australia and Conair New Zealand Ltd in relation to Products purchased in New Zealand.
2. To honour the Warranty, Conair must replace, or exchange parts in, or repair, the Product, as Conair determines, in accordance with paragraph B1 above, subject always to the conditions in Section C below.
3. If any of the conditions in Section C below are inconsistent with any provisions of the ACL or regulations made thereunder, those provisions of the ACL or regulations shall prevail to the extent of the inconsistency.

C. CONDITIONS

1. The Product must be used in accordance with manufacturer's instructions. This Warranty does not apply should the defect in or failure of the Product be attributable to misuse, abuse, accident, act of God such as lightning, or nonobservance of manufacturer's instructions on the part of the user. This Warranty does not cover ordinary wear and tear in the Product or its parts.
2. Conair does not accept liability for a) any loss or damage however suffered, caused by or arising out of any failure to use the Product in accordance with the manufacturer's instructions, and b) any indirect, consequential or economic loss or damage however caused.
3. This Warranty is immediately void if - a) any serial number or appliance plate is removed or defaced, b) the Product has been serviced or otherwise repaired by a person not authorized to do so by Conair or where non approved replacement parts are used.
4. The Product is designed for domestic use only. The Product must be connected to the electrical voltage supply as specified in the ratings label located on the Product. This Warranty does not cover defects arising from non-domestic use or incorrect voltage supply.
5. This Warranty may only be claimed against where proof of original purchase is presented, for example, original receipt or invoice.
6. Any parts of the Product that need to be replaced, or if the whole Product needs to be replaced, the replaced Product, becomes the property of Conair. The Warranty on any replacement Product or parts will expire on the same date that the Warranty Period on the original Product expires.
7. The benefits provided by this Warranty are in addition to all other rights and remedies in respect of the Product which the Purchaser has under the ACL, and applicable laws in New Zealand, which rights and remedies by law may not be excluded. All other warranties and representations express and implied are hereby excluded.
8. The defect must have occurred during the Warranty Period and Purchaser bears the onus of proving that fact, and that the defect was not caused by any of the causes excluded from this Warranty.
9. This Warranty does not cover Products purchased from any person who is not a retailer serviced by Conair's authorised distributors or purchased second hand.

10. The Purchaser is responsible for all postage and freight charges and any other expenses incidental to claiming against this Warranty.
11. The Warranty excludes consumable items (such as blades or brushes) and normal wear and tear.
12. If you're certain your product is defective, and the product is covered by the terms of this warranty, you need to take the product back to the place you purchased it from, where the retailer will replace the product for you on our behalf. In this event, per the terms of this warranty you will need to present this portion of the warranty card and the purchase receipt as proof of purchase so please make sure you keep both this card and your receipt on hand for the duration of the warranty period.

SPARE PARTS

Replacement parts may be available for your product. Contact us on the phone or email address provided for more details. Please provide your product name/model number details, date of purchase and part you require.



Certain trademarks used under license from The Procter & Gamble Company or its affiliates.

©2023 Conair Australia Pty Ltd
Suite 101, 18 Rodborough Rd
Frenchs Forest NSW, 2086
Australia

Conair New Zealand Limited
PO BOX 251159
Pakuranga, Auckland 1706
New Zealand

CONTACT US:

For advice, tips on your new VS product
E-mail us on: aus_info@conair.com

CUSTOMER SERVICE:

Australia: 1800 650 263
New Zealand: 0800 266 247

vssassoon.com.au

VSHA2774A

SEE
AMAZING
BE
AMAZING